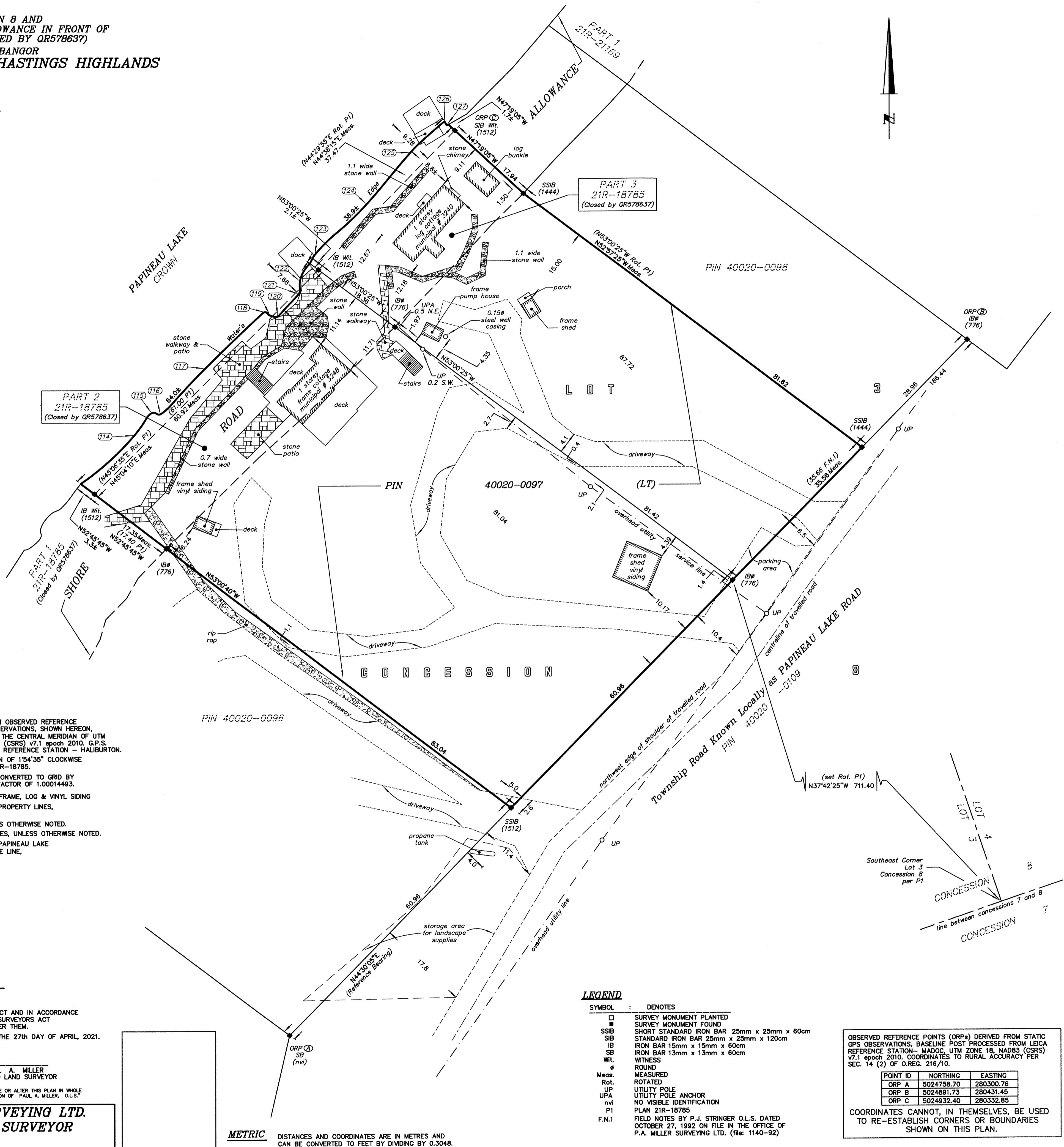


PLAN OF SURVEY OF  
PART OF LOT 3, CONCESSION 8 AND  
PART OF SHORE ROAD ALLOWANCE IN FRONT OF  
LOT 3, CONCESSION 8 (CLOSED BY QR578637)  
GEOGRAPHIC TOWNSHIP OF BANGOR  
MUNICIPALITY OF HASTINGS HIGHLANDS  
COUNTY OF HASTINGS

SCALE 1 : 400  
PAUL A. MILLER, O. L. S.



POINT No.	NORTHING	EASTING
114	5024874.0	280271.0
115	5024878.3	280274.4
116	5024878.1	280276.1
117	5024886.8	280284.7
118	5024897.6	280296.3
119	5024897.0	280297.1
120	5024896.8	280298.6
121	5024901.2	280302.8
122	5024903.6	280302.9
123	5024908.6	280305.8
124	5024918.4	280315.9
125	5024928.2	280324.3
126	5024934.2	280330.8
127	5024933.4	280331.3



**NOTES**

BEARINGS ARE UTM GRID, DERIVED FROM OBSERVED REFERENCE POINTS A AND B, BY STATIC G.P.S. OBSERVATIONS, SHOWN HEREON, BEARING OF N44°30'05"E, REFERRED TO THE CENTRAL MERIDIAN OF UTM ZONE 18 (75° WEST LONGITUDE) NAD 83 (CSRS) v7.1 epoch 2010, G.P.S. BASELINE POST PROCESSED FROM LEICA REFERENCE STATION - HALIBURTON. FOR BEARING COMPARISONS, A ROTATION OF 1°54'35" CLOCKWISE WAS APPLIED TO BEARINGS ON PLAN 21R-18785.

DISTANCES ARE GROUND AND CAN BE CONVERTED TO GRID BY MULTIPLYING BY THE COMBINED SCALE FACTOR OF 1.00014493.

BUILDING TIES ARE TAKEN TO FACE OF FRAME, LOG & VINYL SIDING

BUILDING TIES ARE PERPENDICULAR TO PROPERTY LINES, UNLESS OTHERWISE NOTED

PROPERTY LINES ARE UNFENCED, UNLESS OTHERWISE NOTED.

FENCES ARE LOCATED ON PROPERTY LINES, UNLESS OTHERWISE NOTED.

TIES SHOWN TO THE WATER'S EDGE OF PAPINEAU LAKE ARE AT RIGHT ANGLES TO THE TRAVERSE LINE, UNLESS OTHERWISE NOTED.

**SURVEYORS' CERTIFICATE**

I CERTIFY THAT :

- THIS SURVEY AND PLAN ARE CORRECT AND IN ACCORDANCE WITH THE SURVEYS ACT AND THE REGULATIONS MADE UNDER THEM.
- THIS SURVEY WAS COMPLETED ON THE 27th DAY OF APRIL, 2021.

DATE : JUNE 22, 2021  
PAUL A. MILLER  
ONTARIO LAND SURVEYOR

© (PAUL A. MILLER O.L.S., 2021)  
NO PERSON MAY COPY, REPRODUCE, DISTRIBUTE OR ALTER THIS PLAN IN WHOLE OR IN PART WITHOUT THE WRITTEN PERMISSION OF PAUL A. MILLER, O.L.S.

**P. A. MILLER SURVEYING LTD.**  
**ONTARIO LAND SURVEYOR**  
P. O. BOX 620  
STIRLING  
(613) 396-3070

**METRIC** DISTANCES AND COORDINATES ARE IN METRES AND CAN BE CONVERTED TO FEET BY DIVIDING BY 0.3048.

**LEGEND**

SYMBOL	DENOTES
□	SURVEY MONUMENT PLANTED
■	SURVEY MONUMENT FOUND
SSIB	SHORT STANDARD IRON BAR 25mm x 25mm x 60cm
SIB	STANDARD IRON BAR 25mm x 25mm x 120cm
IB	IRON BAR 15mm x 15mm x 60cm
SB	IRON BAR 13mm x 13mm x 60cm
Wt.	WITNESS
○	ROUND
Meas.	MEASURED
Rot.	ROTATED
UP	UTILITY POLE
UPA	UTILITY POLE ANCHOR
nvi	NO VISIBLE IDENTIFICATION
P1	PLAN 21R-18785
F.N.1	FIELD NOTES BY P.J. STRINGER O.L.S. DATED OCTOBER 27, 1992 ON FILE IN THE OFFICE OF P.A. MILLER SURVEYING LTD. (file: 1140-92)

OBSERVED REFERENCE POINTS (ORP's) DERIVED FROM STATIC GPS OBSERVATIONS, BASELINE POST PROCESSED FROM LEICA REFERENCE STATION - MADOC, UTM ZONE 18, NAD83 (CSRS) v7.1 epoch 2010. COORDINATES TO RURAL ACCURACY PER SEC. 14 (2) OF O.REG. 216/10.

POINT ID	NORTHING	EASTING
ORP A	5024758.70	280300.76
ORP B	5024891.73	280431.45
ORP C	5024932.40	280332.85

COORDINATES CANNOT, IN THEMSELVES, BE USED TO RE-ESTABLISH CORNERS OR BOUNDARIES SHOWN ON THIS PLAN.