

PLAN OF SURVEY OF  
PART OF LOT 7  
CONCESSION 8  
GEOGRAPHIC TOWNSHIP OF MONTEAGLE  
MUNICIPALITY OF HASTINGS HIGHLANDS  
COUNTY OF HASTINGS

SCALE 1 : 750  
TAYLOR G. DERUITER, O. L. S.

25 0 5 10 15 20 25 50m

THE INTENDED PLOT SIZE OF THIS PLAN IS 609.6mm IN WIDTH  
BY 457.2mm IN HEIGHT WHEN PLOTTED AT A SCALE OF 1:750.

NOTES

BEARINGS ARE UTM GRID, DERIVED FROM OBSERVED REFERENCE POINTS A AND B, BY STATIC GNSS OBSERVATIONS, SHOWN HEREON, BEARING OF N71°08'20"E, REFERRED TO THE CENTRAL MERIDIAN OF UTM ZONE 18, (75° WEST LONGITUDE) NAD 83 (CSRS) v7.1 EPOCH 2010. GNSS BASELINE POST PROCESSED FROM LEICA REFERENCE STATION - BARRYS BAY.

FOR BEARING COMPARISONS, A ROTATION OF 2°01'45" CLOCKWISE WAS APPLIED TO BEARINGS ON PLAN 21R-22731.

DISTANCES ARE GROUND AND CAN BE CONVERTED TO GRID BY MULTIPLYING BY THE COMBINED SCALE FACTOR OF 1.00012703.

PROPERTY LINES ARE UNFENCED, UNLESS OTHERWISE NOTED.

FENCES ARE LOCATED ON PROPERTY LINES, UNLESS OTHERWISE NOTED.

SSIB'S PLANTED DUE TO INSUFFICIENT OVERBURDEN.

SCHEDULE

PART	LOT	CONCESSION	PIN	
1	Pt. 7	8	PIN 40035-0081 (LT)	0.934 Ha.
2				0.513 Ha.
3				487 sq.m.

PARTS 1, 2 & 3 COMPRISE PART OF PIN 40035-0081 (LT)

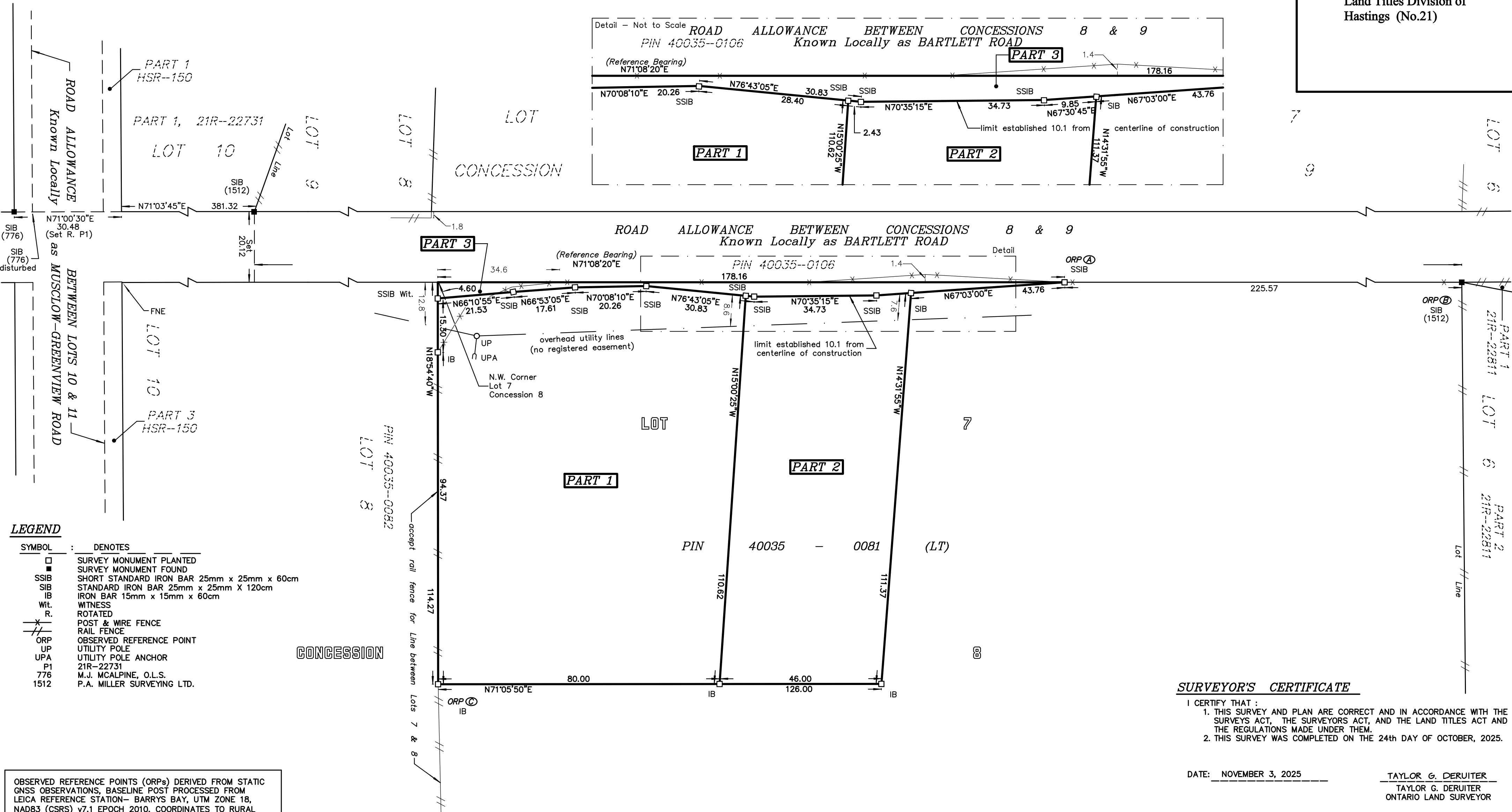
PLAN 21R-27097

Received and deposited

December 9<sup>th</sup>, 2025

Judy Toussaint

Representative for the  
Land Registrar for the  
Land Titles Division of  
Hastings (No.21)



LEGEND

SYMBOL	DENOTES
□	SURVEY MONUMENT PLANTED
■	SURVEY MONUMENT FOUND
SSIB	SHORT STANDARD IRON BAR 25mm x 25mm x 60cm
SIB	STANDARD IRON BAR 25mm x 25mm X 120cm
IB	IRON BAR 15mm x 15mm x 60cm
Wit.	WITNESS
R.	ROTATED
X	POST & WIRE FENCE
///	RAIL FENCE
ORP	OBSERVED REFERENCE POINT
UP	UTILITY POLE
UPA	UTILITY POLE ANCHOR
P1	21R-22731
776	M.J. MCALPINE, O.L.S.
1512	P.A. MILLER SURVEYING LTD.

OBSERVED REFERENCE POINTS (ORPs) DERIVED FROM STATIC GNSS OBSERVATIONS, BASELINE POST PROCESSED FROM LEICA REFERENCE STATION- BARRYS BAY, UTM ZONE 18, NAD83 (CSRS) v7.1 EPOCH 2010. COORDINATES TO RURAL ACCURACY PER SEC. 14 (2) OF O.REG. 216/10.

POINT ID	NORTHING	EASTING
ORP A	5008419.40	282172.17
ORP B	5008492.33	282385.65
ORP C	5008253.68	282040.59

COORDINATES CANNOT, IN THEMSELVES, BE USED TO RE-ESTABLISH CORNERS OR BOUNDARIES SHOWN ON THIS PLAN.

SURVEYOR'S CERTIFICATE

I CERTIFY THAT :  
1. THIS SURVEY AND PLAN ARE CORRECT AND IN ACCORDANCE WITH THE SURVEYS ACT, THE SURVEYORS ACT, AND THE LAND TITLES ACT AND THE REGULATIONS MADE UNDER THEM.  
2. THIS SURVEY WAS COMPLETED ON THE 24th DAY OF OCTOBER, 2025.

DATE: NOVEMBER 3, 2025

TAYLOR G. DERUITER  
TAYLOR G. DERUITER  
ONTARIO LAND SURVEYOR

THIS PLAN OF SURVEY RELATES TO AOLS PLAN SUBMISSION  
FORM NUMBER V-122156.

P. A. MILLER SURVEYING LTD.  
ONTARIO LAND SURVEYOR

P. O. BOX 520  
STIRLING  
(613) 395-3070

FILE:	25-12466	CID: ????
DWG:	25-12466.dwg	CHK: TGD X

METRIC

DISTANCES AND COORDINATES ARE IN METRES AND CAN BE CONVERTED TO FEET BY DIVIDING BY 0.3048.