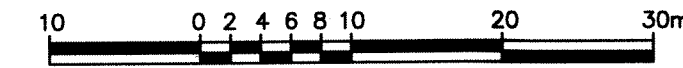


SITE FEATURE COORDINATE TABLE		
POINT No.	NORTHING	EASTING
391	5008279.8	279140.0
392	5008274.8	279139.3
393	5008253.4	279135.6
394	5008243.7	279138.9

PLAN OF SURVEY OF
PART OF LOT 14
CONCESSION 9
GEOGRAPHIC TOWNSHIP OF MONTEAGLE
MUNICIPALITY OF HASTINGS HIGHLANDS
COUNTY OF HASTINGS

SCALE 1 : 500
KEVIN R. D. SMITH, O. L. S.



I REQUIRE THIS PLAN TO BE DEPOSITED UNDER THE LAND TITLES ACT.

PLAN 21R-

RECEIVED AND DEPOSITED

DATE : FEBRUARY 7, 2024

DATE : _____

[Signature]
KEVIN R. D. SMITH, O. L. S.

REPRESENTATIVE FOR LAND REGISTRAR FOR THE LAND TITLES DIVISION OF HASTINGS (21).

SCHEDULE

PART	LOT	CONCESSION	PIN	AREA
1	Pt. 14	9	40038-0323 (LT)	0.298 Hectares

PART 1 COMPRISES PART OF PIN 40038-0323 (LT).

NOTES

BEARINGS ARE UTM GRID, DERIVED FROM OBSERVED REFERENCE POINTS A AND B, BY STATIC G.N.S.S. OBSERVATIONS, SHOWN HEREON, BEARING OF N71°00'10"E, REFERRED TO THE CENTRAL MERIDIAN OF UTM ZONE 18 (75° WEST LONGITUDE) NAD 83 (CSRS) v7.1 epoch 2010. G.N.S.S. BASELINE POST PROCESSED FROM LEICA REFERENCE STATION - HALIBURTON. FOR BEARING COMPARISONS, A ROTATION OF 158°10' CLOCKWISE WAS APPLIED TO BEARINGS ON PLAN 21R-15583.

DISTANCES ARE GROUND AND CAN BE CONVERTED TO GRID BY MULTIPLYING BY THE COMBINED SCALE FACTOR OF 1.00014494

BUILDING TIES ARE PERPENDICULAR TO PROPERTY LINES UNLESS OTHERWISE NOTED.

BUILDING TIES TAKEN TO FACE OF CLADDING UNLESS OTHERWISE NOTED.

PROPERTY LINES ARE UNFENCED, UNLESS OTHERWISE NOTED.

FENCES ARE LOCATED ON PROPERTY LINES, UNLESS OTHERWISE NOTED.

SSIB'S PLANTED DUE TO INSUFFICIENT OVERBURDEN

LEGEND

SYMBOL	DENOTES
□	SURVEY MONUMENT PLANTED
■	SURVEY MONUMENT FOUND
SSIB	SHORT STANDARD IRON BAR 25mm x 25mm x 60cm
SIB	STANDARD IRON BAR 25mm x 25mm X 120cm
ORP	OBSERVED REFERENCE POINT
FR.	FRAME CONSTRUCTION
V.S.	VINYL SIDED
UP	UTILITY POLE
UPA	UTILITY POLE ANCHOR
O/H WIRE	OVERHEAD WIRE
P1	PLAN OF SURVEY BY P.A. MILLER O.L.S. DATED DECEMBER 9, 2019 ON FILE IN THE OFFICE OF P.A. MILLER SURVEYING LTD. (19-9842).
P1	PLAN, 21R-15583
1512	P.A. MILLER SURVEYING LTD.
1444	P.J. STRINGER, OLS
776	M.J. MCALPINE, OLS
1183	H.F. GRANDER CO. LTD.
S/T	SUBJECT TO

SURVEYOR'S CERTIFICATE

I CERTIFY THAT :

- THIS SURVEY AND PLAN ARE CORRECT AND IN ACCORDANCE WITH THE SURVEYS ACT, THE SURVEYORS ACT, AND THE LAND TITLES ACT AND THE REGULATIONS MADE UNDER THEM.
- THIS SURVEY WAS COMPLETED ON THE 31st DAY OF OCTOBER, 2023.

DATE : FEBRUARY 7, 2024

[Signature]
KEVIN R. D. SMITH
ONTARIO LAND SURVEYOR

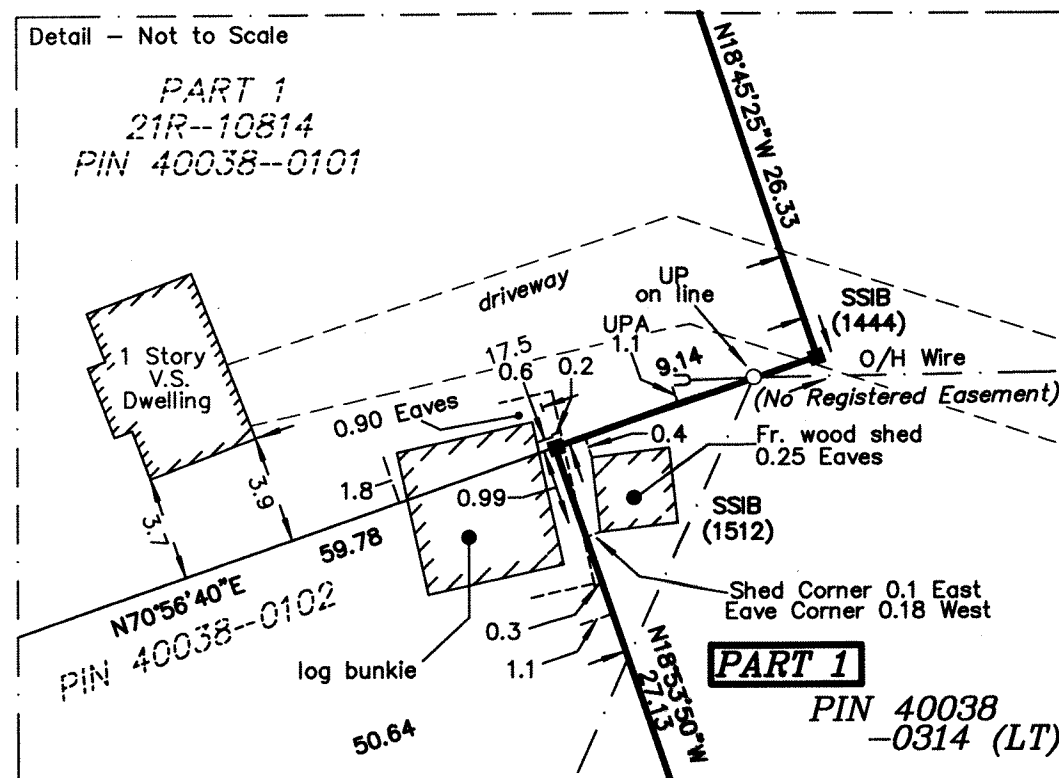
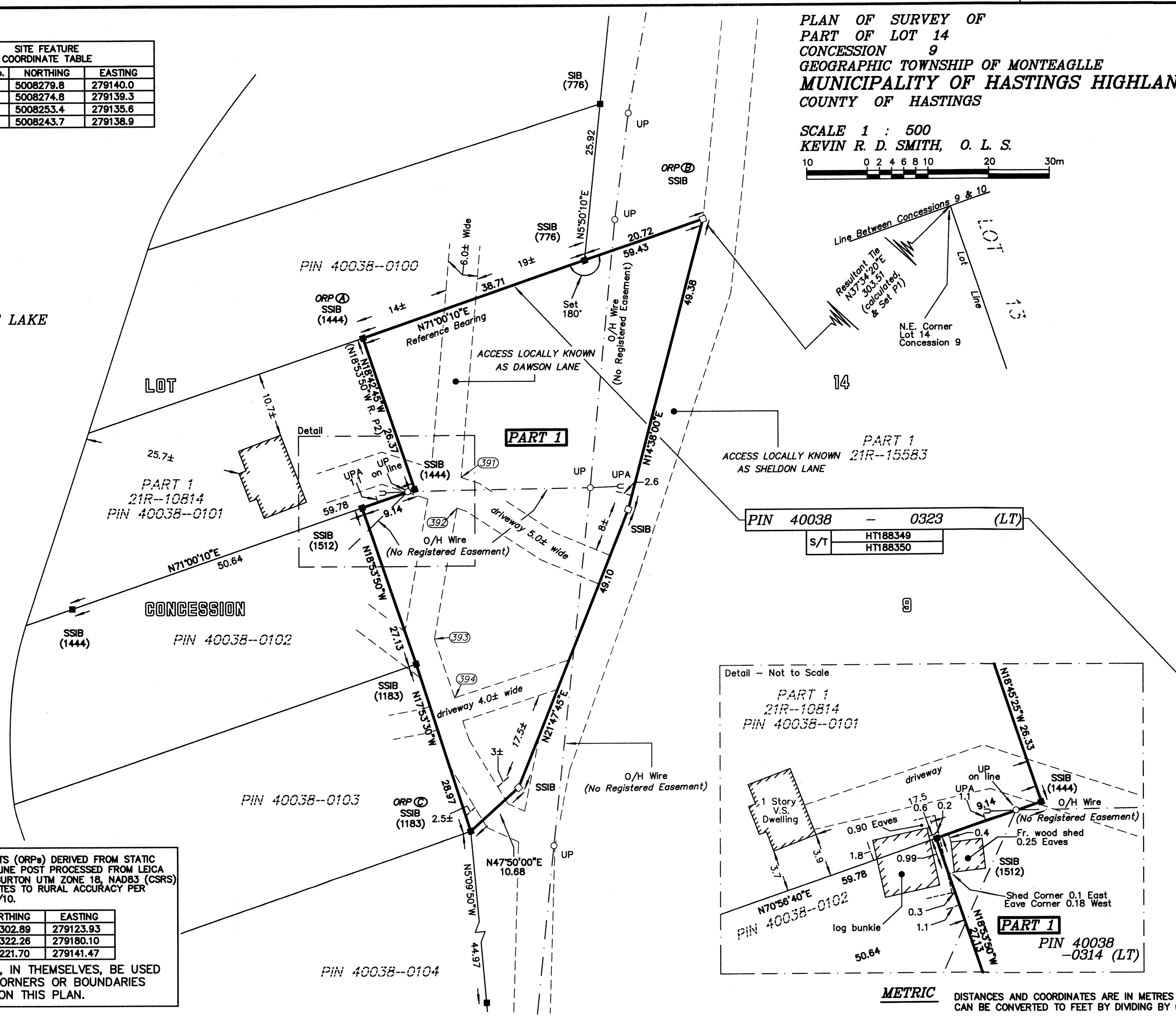
THIS PLAN OF SURVEY RELATES TO AOLS PLAN SUBMISSION FORM NUMBER V-

P. A. MILLER SURVEYING LTD.
ONTARIO LAND SURVEYOR

P. O. BOX 620
STIRLING
(613) 386-3070

21-10831

SALMON TROUT LAKE



OBSERVED REFERENCE POINTS (ORPs) DERIVED FROM STATIC GNSS OBSERVATIONS, BASELINE POST PROCESSED FROM LEICA REFERENCE STATION- HALIBURTON UTM ZONE 18, NAD83 (CSRS) v7.1 epoch 2010. COORDINATES TO RURAL ACCURACY PER SEC. 14 (2) OF O.REG. 216/10.

POINT ID	NORTHING	EASTING
ORP A	5008302.89	279123.93
ORP B	5008322.26	279180.10
ORP C	5008221.70	279141.47

COORDINATES CANNOT, IN THEMSELVES, BE USED TO RE-ESTABLISH CORNERS OR BOUNDARIES SHOWN ON THIS PLAN.

METRIC

DISTANCES AND COORDINATES ARE IN METRES AND CAN BE CONVERTED TO FEET BY DIVIDING BY 0.3048.