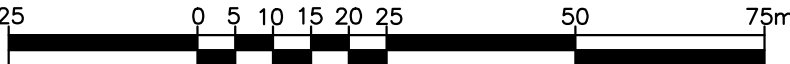


PLAN OF SURVEY OF  
PART OF LOT 17  
CONCESSION 16  
GEOGRAPHIC TOWNSHIP OF HERSCHEL  
MUNICIPALITY OF HASTINGS HIGHLANDS  
COUNTY OF HASTINGS

SCALE 1 : 1000  
TAYLOR G. DERUITER, O. L. S.



THE INTENDED PLOT SIZE OF THIS PLAN IS 647.7mm IN WIDTH  
BY 355.6mm IN HEIGHT WHEN PLOTTED AT A SCALE OF 1:1000.

NOTES

BEARINGS ARE UTM GRID, DERIVED FROM OBSERVED REFERENCE POINTS A AND B, BY STATIC GNSS OBSERVATIONS, SHOWN HEREON, BEARING OF N67°09'55"E, REFERRED TO THE CENTRAL MERIDIAN OF UTM ZONE 17 (75° WEST LONGITUDE) NAD 83 (CSRS) v7.1 EPOCH 2010. GNSS BASELINE POST PROCESSED FROM LEICA REFERENCE STATION – BARRYS BAY.

FOR BEARING COMPARISONS, A ROTATION OF 2°09'35" COUNTER-CLOCKWISE WAS APPLIED TO BEARINGS ON P1 & P2.

DISTANCES ARE GROUND AND CAN BE CONVERTED TO GRID BY MULTIPLYING BY THE COMBINED SCALE FACTOR OF 1.00023624.

PROPERTY LINES ARE UNFENCED, UNLESS OTHERWISE NOTED.

SSIB'S PLANTED DUE TO INSUFFICIENT OVERBURDEN.

COORDINATES OF NON RECTILINEAR TIES		
Point	Northing	Easting
61	5010333.0	733809.0
62	5010301.0	733809.1
124	5010251.3	733802.9

SCHEDULE

PART	LOT	CONCESSION	PIN	AREA
1	Pt. 17	16	PIN 40049--0054 (LT)	3.34 Ha.
2				640± sq.m.
3				780± sq.m.

PARTS 1, 2 & 3 COMPRISE PART OF PIN 40049--0054 (LT).  
PART 2 IS SUBJECT TO QR419476.

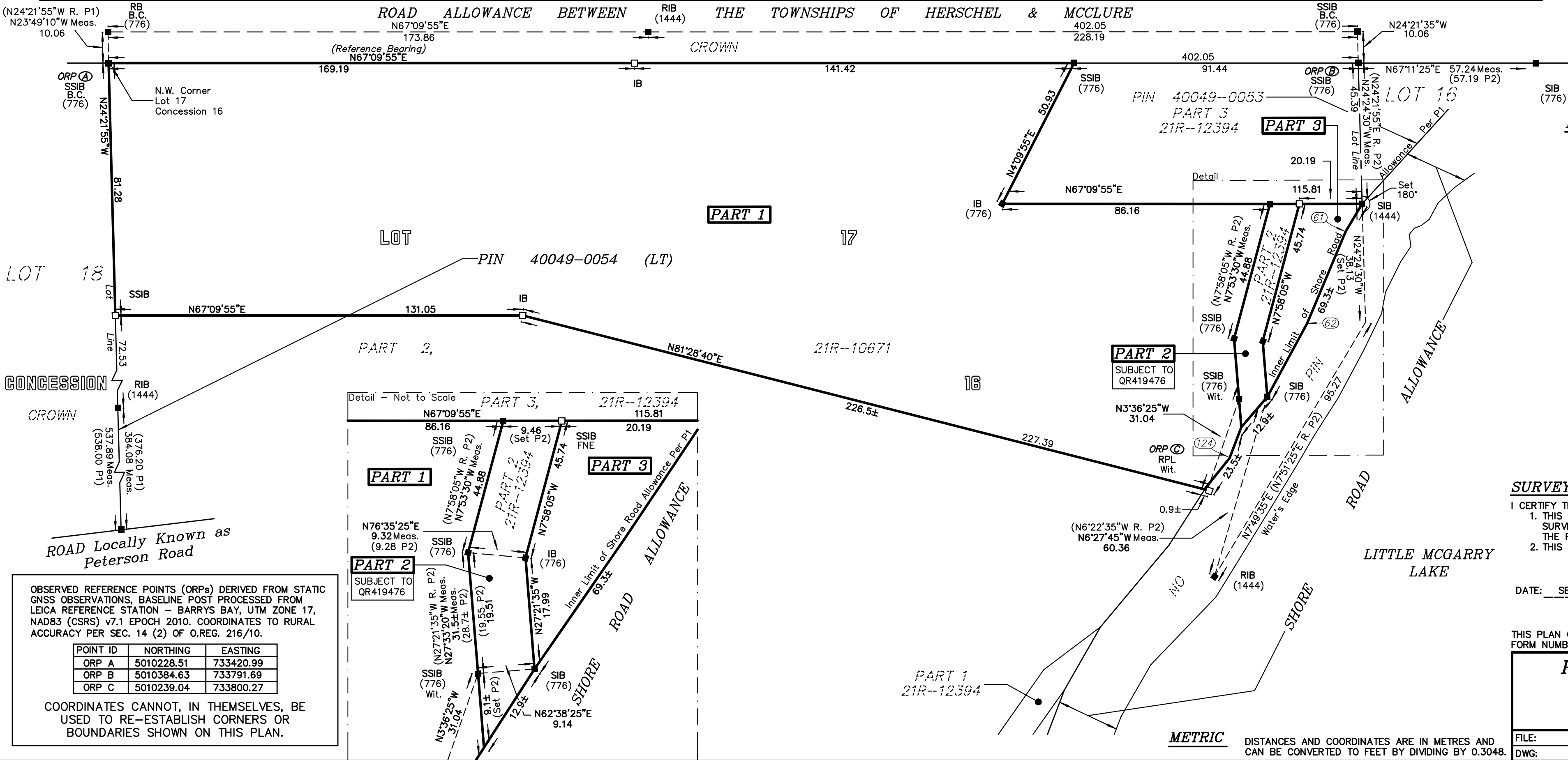
PLAN 21R-27064

Received and deposited

October 22<sup>nd</sup>, 2025

Colleen O'leary

Representative for the  
Land Registrar for the  
Land Titles Division of  
Hastings (No.21)



LEGEND

SYMBOL	DENOTES
□	SURVEY MONUMENT PLANTED
■	SURVEY MONUMENT FOUND
SSIB	SHORT STANDARD IRON BAR 25mm x 25mm x 60cm
SIB	STANDARD IRON BAR 25mm x 25mm X 120cm
RB	ROCK BAR
RIB	ROUND IRON BAR
IB	IRON BAR 15mm x 15mm x 60cm
RPL	ROCK PLUG 15mm x 15mm x 15cm
B.C.	BRASS CAP
Wit.	WITNESS
MEAS.	MEASURED
R.	ROTATED
ORP	OBSERVED REFERENCE POINT
P1	21R--10671
P2	21R--12394
776	M.J. MCALPINE, O.L.S.
1444	P.J. STRINGER, O.L.S.

SURVEYOR'S CERTIFICATE

I CERTIFY THAT :  
1. THIS SURVEY AND PLAN ARE CORRECT AND IN ACCORDANCE WITH THE SURVEYS ACT, THE SURVEYORS ACT, AND THE LAND TITLES ACT AND THE REGULATIONS MADE UNDER THEM.  
2. THIS SURVEY WAS COMPLETED ON THE 22nd DAY OF AUGUST, 2025.

DATE: SEPTEMBER 25, 2025

TAYLOR G. DERUITER  
TAYLOR G. DERUITER  
ONTARIO LAND SURVEYOR

THIS PLAN OF SURVEY RELATES TO AOLS PLAN SUBMISSION  
FORM NUMBER V-113725.

P. A. MILLER SURVEYING LTD.  
ONTARIO LAND SURVEYOR

P. O. BOX 620  
STIRLING  
(613) 395-3070

FILE:	25-12428	CID: ????
DWG:	25-12428A.dwg	CHK: TGD X

METRIC

DISTANCES AND COORDINATES ARE IN METRES AND  
CAN BE CONVERTED TO FEET BY DIVIDING BY 0.3048.