

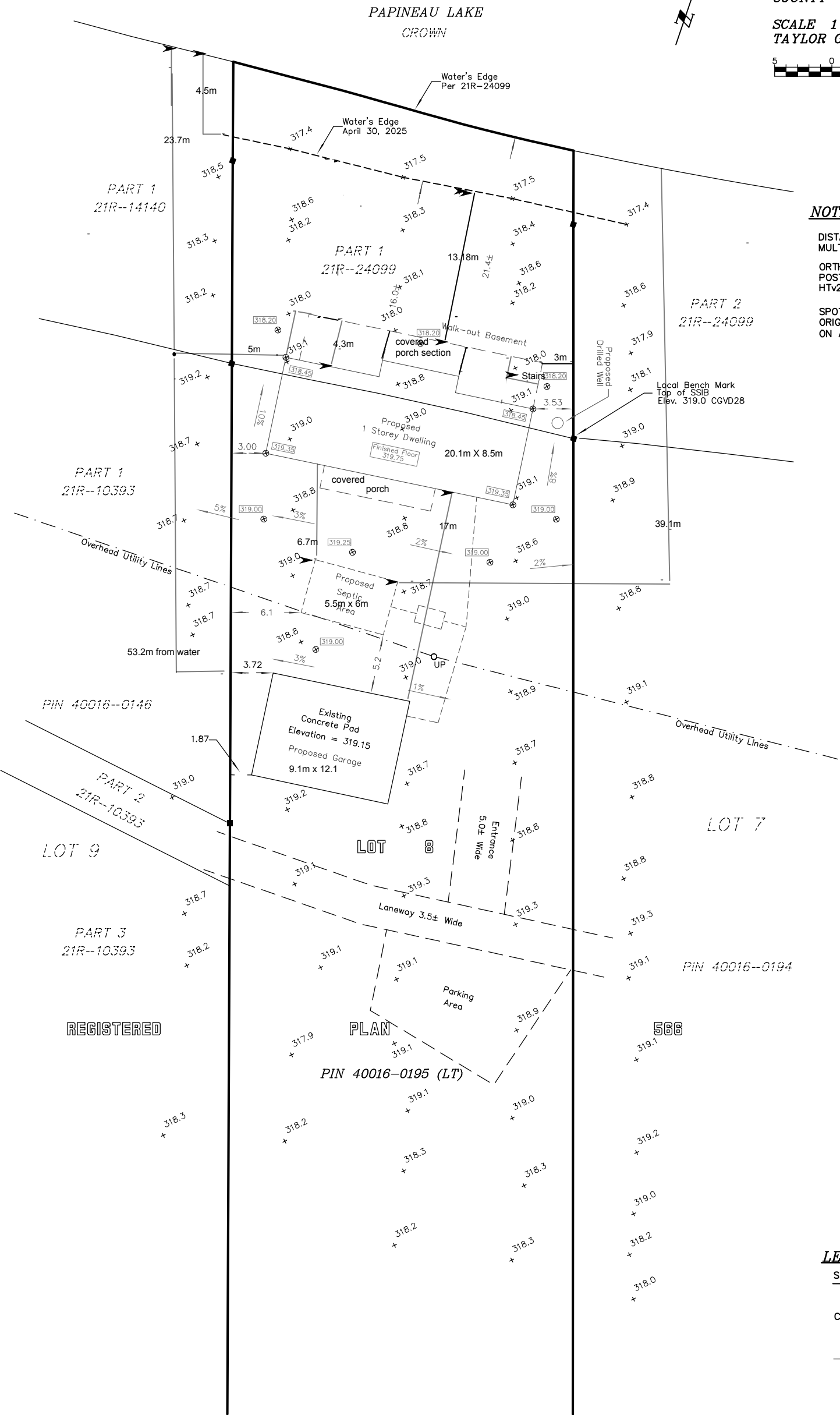
DRAINAGE PLAN OF PART OF
THE SHORE ROAD ALLOWANCE ALONG
PAPINEAU LAKE IN FRONT OF
LOT 2, CONCESSION 6 AND
PART OF LOT 8
REGISTERED PLAN 566
GEOGRAPHIC TOWNSHIP OF WICKLOW
MUNICIPALITY OF HASTINGS HIGHLANDS
COUNTY OF HASTINGS

SCALE 1 : 250
TAYLOR G. DERUITER, O. L. S.



NOTES

DISTANCES ARE GROUND AND CAN BE CONVERTED TO GRID BY
MULTIPLYING BY THE COMBINED SCALE FACTOR OF 1.000153.
ORTHOMETRIC HEIGHTS ARE DERIVED FROM GNSS OBSERVATIONS
POST PROCESSED FROM LEICA BASE STATION-BARRY'S BAY AND THE
HTV2 GEOID MODEL.
SPOT ELEVATIONS AND SITE CONDITIONS ARE DERIVED FROM
ORIGINAL FIELD WORK CONDUCTED BY P. A. MILLER SURVEYING LTD.
ON APRIL 30th, 2025.



LEGEND

SYMBOL	:	DENOTES
■		SURVEY MONUMENT
CGVD28		CANADIAN GEODETIC VERTICAL DATUM 1928 (1978)
UP		UTILITY POLE
Ø		DIAMETER
---		PROPOSED IMPROVEMENTS
+ 315.8		SPOT ELEVATION
314.96		PROPOSED GRADE ELEVATION

P. A. MILLER SURVEYING LTD.
ONTARIO LAND SURVEYOR

P. O. BOX 520
STIRLING
(613) 395-3070

METRIC

DISTANCES AND COORDINATES ARE IN METRES AND
CAN BE CONVERTED TO FEET BY DIVIDING BY 0.3048.